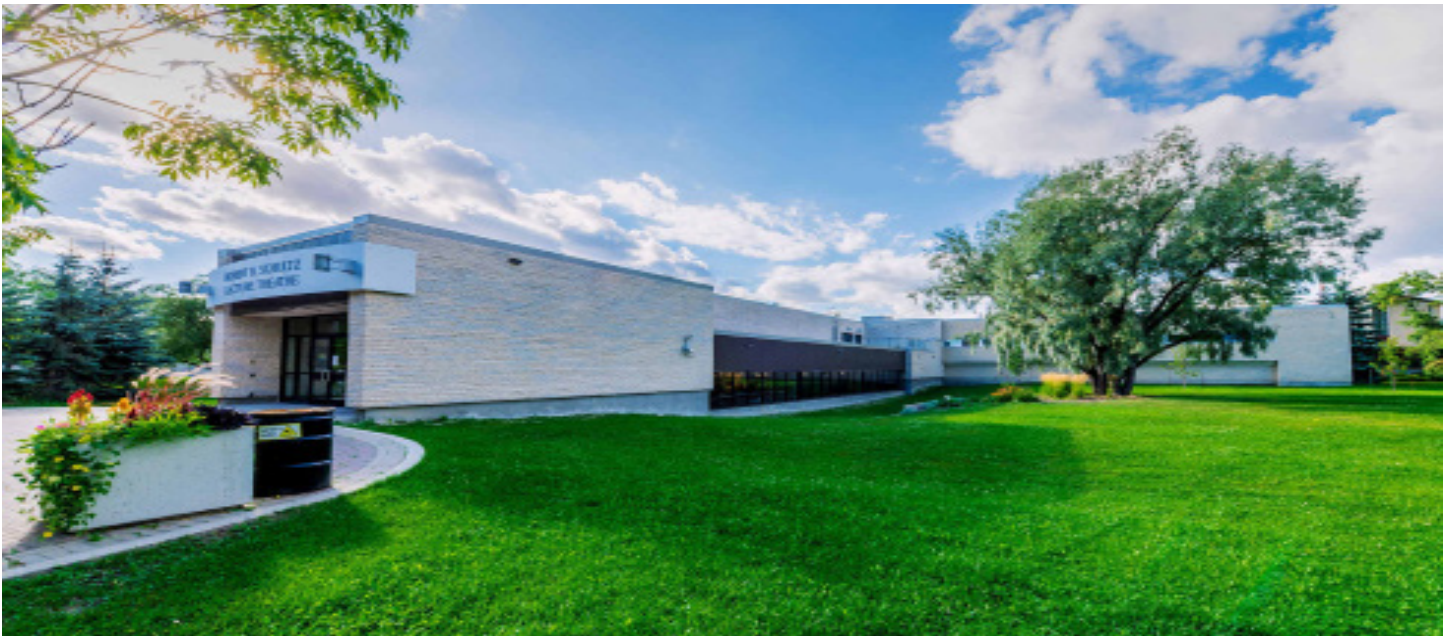




Pacific Institute *for the*
Mathematical Sciences


2017 Graduate Math Modelling in Industry Workshop



July 31- Aug 5, 2017
University of Manitoba

Program Schedule

Getting Started

 **Get connected:** Select the "eduroam" or "uofm-guest" wireless network on your wireless device. Open up a web browser, and you will be directed to the login page. Note that "eduroam" uses your home university credentials, and must be set up in advance.

FAQs

Q: Where do I check in on the first day?

Sunday, at the ice breaker at Pony Corral restaurant. Monday morning, at St. John's College

Q: Where are the sessions?

- All main sessions will be in the **Robert B. Schultz Theater in St. John's College**
- You will find a copy of the building floor on page 8 and a campus map at the end of the program.

Q: Will the program change?

Program changes and updates will be announced at each session.

Q: When should I wear my badge?

Please wear your name badges at all times on site so that PIMS Staff recognize you as a guest.

Q: Where can I go for help on site?

If you need assistance or have a question during the conference, please feel free to talk to one of the organizers.

Q: Where can I get refreshments and meals?

For snacks or quick meals, please view the list of UManitoba eateries here: <http://umanitoba.ca/campus/housing/guests/food.html>

Q: Where can I get directions for campus and the building?

You will find a copy of the building floor on page 3 and a campus map at the end of the program.

Q: Where can I get bus information?

Google maps is the way to go, but see also the information on page 9.

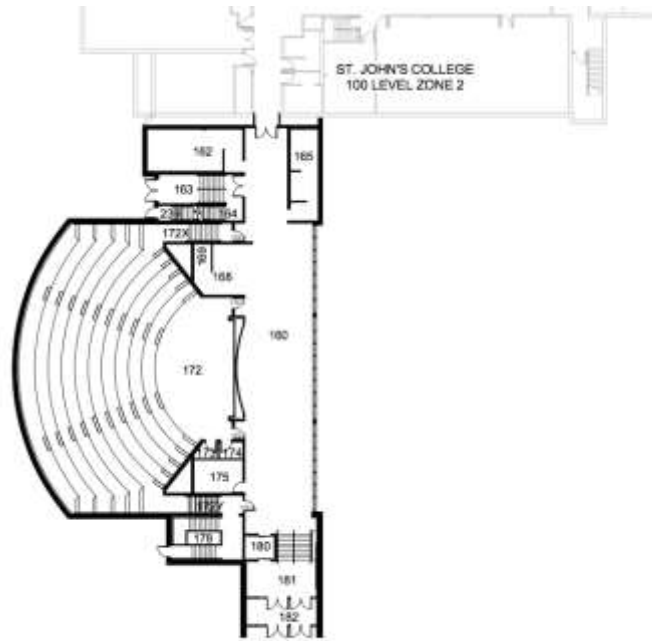
Q: Where can I get a cab to pick me up from the Venue?

You can call Unicity Taxi (204-925-3131) or Duffy's Taxi (204-925-010) and request to be picked up at St. John's College

There will be photography throughout this event. PIMS' event photography is used across a variety of our communications platforms including web, print and electronic promotional materials. If, for any reason, you wish not to have your photo taken or used in this manner, please contact the event organizers.

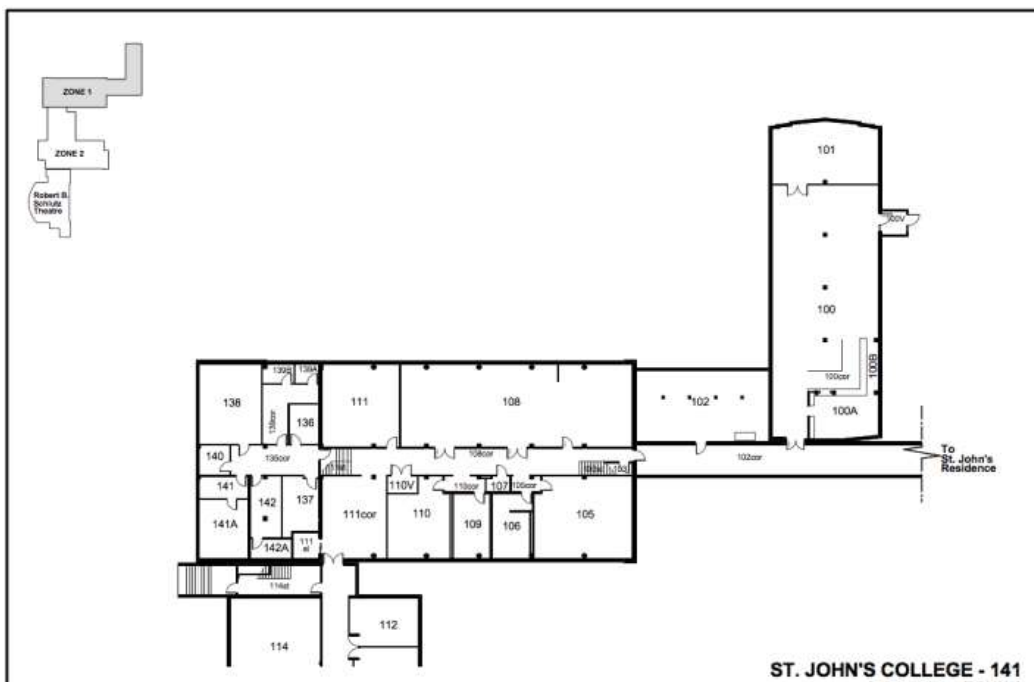
Conference Room Guide:

All Main Sessions: Robert Schultz Theatre, South end of St John's College



ROBERT B. SCHULTZ THEATRE - 142

Break-out Rooms: Zone 1 (North end) of St John's College



ST. JOHN'S COLLEGE - 141

General Travel Directions:

Airport to University of Manitoba: The Best Western Hotel on Pembina has a free shuttle available to all participants staying at the hotel during the workshop.

Public transit to University of Manitoba: A quick 10 minute bus ride takes you from the hotel to the university. Route 60 or 160 on Pembina Highway is the route to take. See the map on page 9 for details. A bus pass is included in registration materials for out-of-town participants.

Parking at University of Manitoba: <http://umanitoba.ca/campus/parking/visitor/index.html>

University of Manitoba Map <http://umanitoba.ca/maps/>

Schedule

Sunday July 30

3:00pm & onwards Arrival and check-in, Best Western Pembina Inn, 1714 Pembina Hwy, Winnipeg
5:30pm - 7:00pm Ice breaker at Pony Corral, 1700 Pembina Hwy, Winnipeg

Monday, July 31

8:30am - 9:00am Registration: outside **Schultz Theatre**, St John's College, UManitoba
9:00am - 9:15am Welcome from UManitoba and PIMS. **Schultz Theatre, St. John's College**
9:15am - 10:30am Project descriptions by mentors (25 minutes each)
Team 1 - Julien Arino, UManitoba: **Reconciling potential and effective air travel data.**
Team 2 - Marine Jacquier, UManitoba: **Modelling cell signaling pathways**
Team 3 - Sarah Plosker, BrandonU: **Modelling a quantum spin network**
10:30am - 11:00am Coffee Break (**Galleria, by Schultz Theatre**)
11:00am - 11:50am Continued: Project descriptions by mentors (25 minutes each)
Team 4 – Stephanie Portet, UManitoba: **Modelling the organization of the cytoskeleton**
Team 5 – A. Thavaneswaran and A. Paseka : **Financial Risk Forecasting**
11:50am - 12:00pm Instructions for afternoon / week
12:00pm - 1:00pm Lunch (please view a list of UManitoba eateries: <http://umanitoba.ca/campus/housing/guests/food.html>)
1:00pm - 2:30pm Workshop – Tools for Mathematical Computing (M. Lamoureux & R. Slevinski)
2:30pm - 5:30pm Start work on projects (Rooms listed on page 9)
5:30pm onward Free evening/ Work on projects as per group preference

Tuesday, Aug 1

8:30am - 10:00 am	Workshop with M, Lamoureux (PIMS). Mathematical Modeling. Schultz Theatre
10:00am - 10:30am	Coffee Break (Galleria, by Schultz Theatre)
10:30am - 12:00pm	Work in teams (Rooms listed on page 8)
12:00pm - 1:00pm	Lunch (please view a list of UManitoba eateries: http://umanitoba.ca/campus/housing/guests/food.html)
1:00pm - 5:30pm	Work in teams
5:30pm onward	Free evening/ Work on projects as per group preference

Wednesday, Aug 2

8:30am - 12:00pm	Work in teams
12:00pm - 1:00pm	Lunch (please view a list of UManitoba eateries: http://umanitoba.ca/campus/housing/guests/food.html)
1:00pm - 3:00pm	Work in teams
3:00pm - 4:00pm	Presentation of Progress Reports (20 minutes each). Schultz Theatre Team 3,4,5
4:00pm - 4:30pm	Coffee Break (Galleria, by Schultz Theatre)
4:30pm - 5:10pm	Continued: Presentation of Progress Reports (20 minutes each) Team 1-2
5:10pm onward	Free evening/ Work on projects as per group preference

Thursday, Aug 3

8:30am - 12:00pm	Work in teams
12:00pm - 3:00pm	Excursion – trip TBC
3:00pm - 5:30pm	Work in teams
5:30pm onward	Free evening/ Work on projects as per group preference

Friday, Aug 4

8:30am - 5:30pm	Work in teams
5:30pm onward	Meet-up for Barbeque dinner: The Daily Bread, at St. John's College Free evening/ Work on projects as per group preference

Saturday, Aug 5

- 9:00am - 10:15am Final presentations, by team members (25 minutes each) **Schultz Theatre**
Teams 1- 3
- 10:15am - 10:45am Coffee Break (**Galleria, by Schultz Theatre**)
- 10:45am - 11:35am Continued: Final presentations, by team members (25 minutes each)
Team 4, 5
- 11:35am - 12:00pm Wrap up, and departures

Event Survey: Participants are requested to fill in the anonymous event evaluation survey here: <http://ow.ly/DIMK30dUJYJ> .

Teams and Participant List

Project 1:

Mentor: Julien Arino - University of Manitoba

Topic: *Reconciling potential and effective air travel data*

Team members:

1. Majid Afshar, Memorial University
2. Jane Breen , University of Manitoba
3. Md Ismail Hossain, University of Manitoba
4. Xiang Jiang, Dalhousie University
5. Mohammed Mujaab Kamso , University of Manitoba
6. Samuel Laferriere, Université de Montréal
7. Tae Yoon Lee, University of British Columbia

Project 2:

Mentor: Marine Jacquier - University of Manitoba

Topic: *Modeling cell signaling pathways*

Team members:

1. Jummy David, University of British Columbia
2. Yang Du, University of Alberta
3. Kanika Grover, University of Manitoba
4. Farzaneh Jannat, University of Manitoba
5. Luyao Lin, Simon Fraser University
6. Yinduo Ma, Wilfrid Laurier University
7. Negin Pasban Roozbahani, University of Manitoba

Project 3:**Mentor: Sarah Polsker - Brandon University****Topic: *Modelling a quantum spin network*****Team members:**

1. Muhammad Zubair, University of Manitoba
2. Charlene Chu, University of Toronto
3. Mounada Gbadamassi, Universite de Moncton
4. Ruwan Chamara Karunanayaka, Simon Fraser University
5. Naghmeh Shahverdi, University of New Brunswick
6. Xiaohong Zhang, University of Manitoba

Project 4:**Mentor: Stephanie Portet - University of Manitoba****Topic: *Modelling the organization of the cytoskeleton*****Team members:**

1. Maryam Ghanbari, University of Manitoba
2. Shirin Ghanbari, University of Manitoba
3. Ilia Ilmer, University of Calgary
4. Ryan Sherbo, University of Manitoba
5. Konstantinos Stamatis, University of Manitoba

Project 5:**Mentors: A. Thavaneswaran & A. Paseka - Univeristy of Manitoba****Topic: *Financial Risk Forecasting*****Team members:**

1. Neda Arzandeh, University of Manitoba
2. Justin Daniels, University of Manitoba
3. David Valere Hagenimana, University of Nairobi
4. Tao Lei, McGill University
5. Bo Pan, University of Alberta
6. Charles Sam, University of Calgary
7. Sima Sharifirad, Dalhousie University
8. Thomas Situma, University of Nairobi

GMMIW Staff:

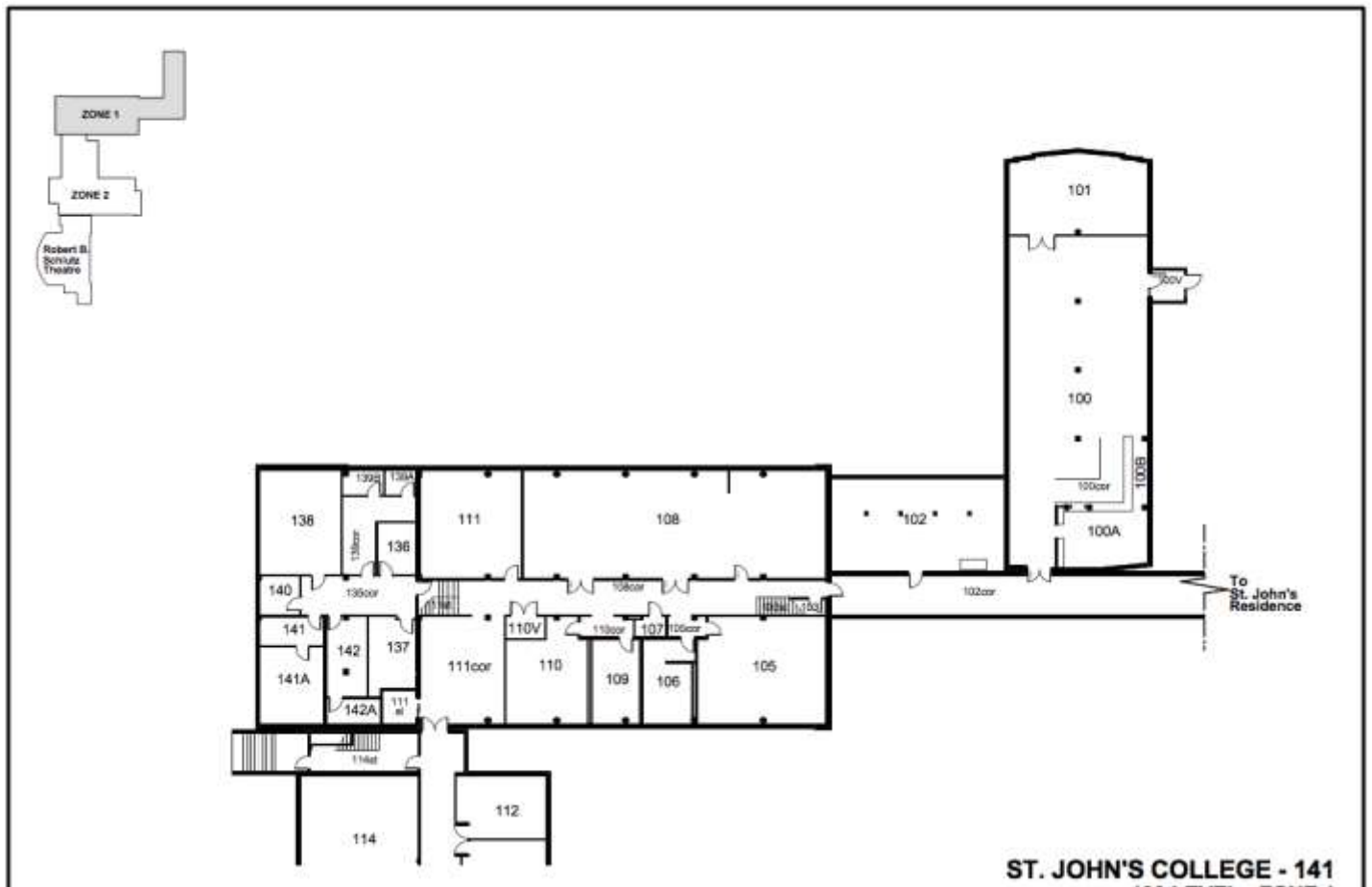
Michael Lamoureux: PIMS Innovation Coordinator

John DiNoto: PIMS UManitoba Site Administrator

Meeting Rooms

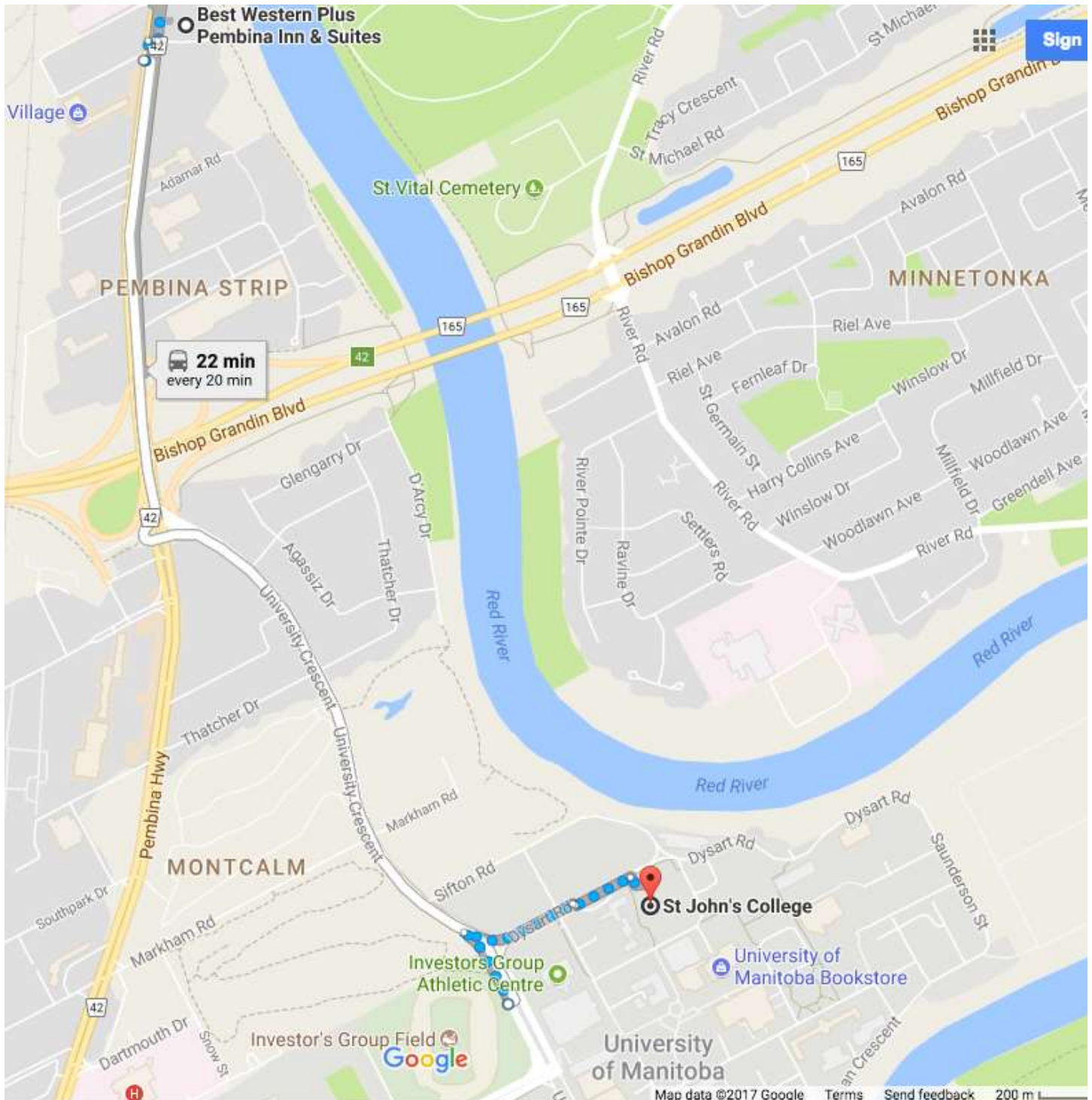
Team	Team Meetings (8:00am -9:00pm)	Computer Room (8:00am -9:00pm)
Project 1: Julien Arino	Room 111, St John's	Room 107, Machray
Project 2: Marine Jacquier	Room 113, St John's	Room 107, Machray
Project 3: Sarah Polsker	Room 114, St John's	Room 108, Machray
Project 4: Stephanie Portet	Room 117, St John's	Room 108, Machray
Project 5: A. Paseka and A. Thanvaneswaran	Room 128, St John's	Room 311, Machray

Team Meeting Rooms: Zone 1 (North end) of St John's College

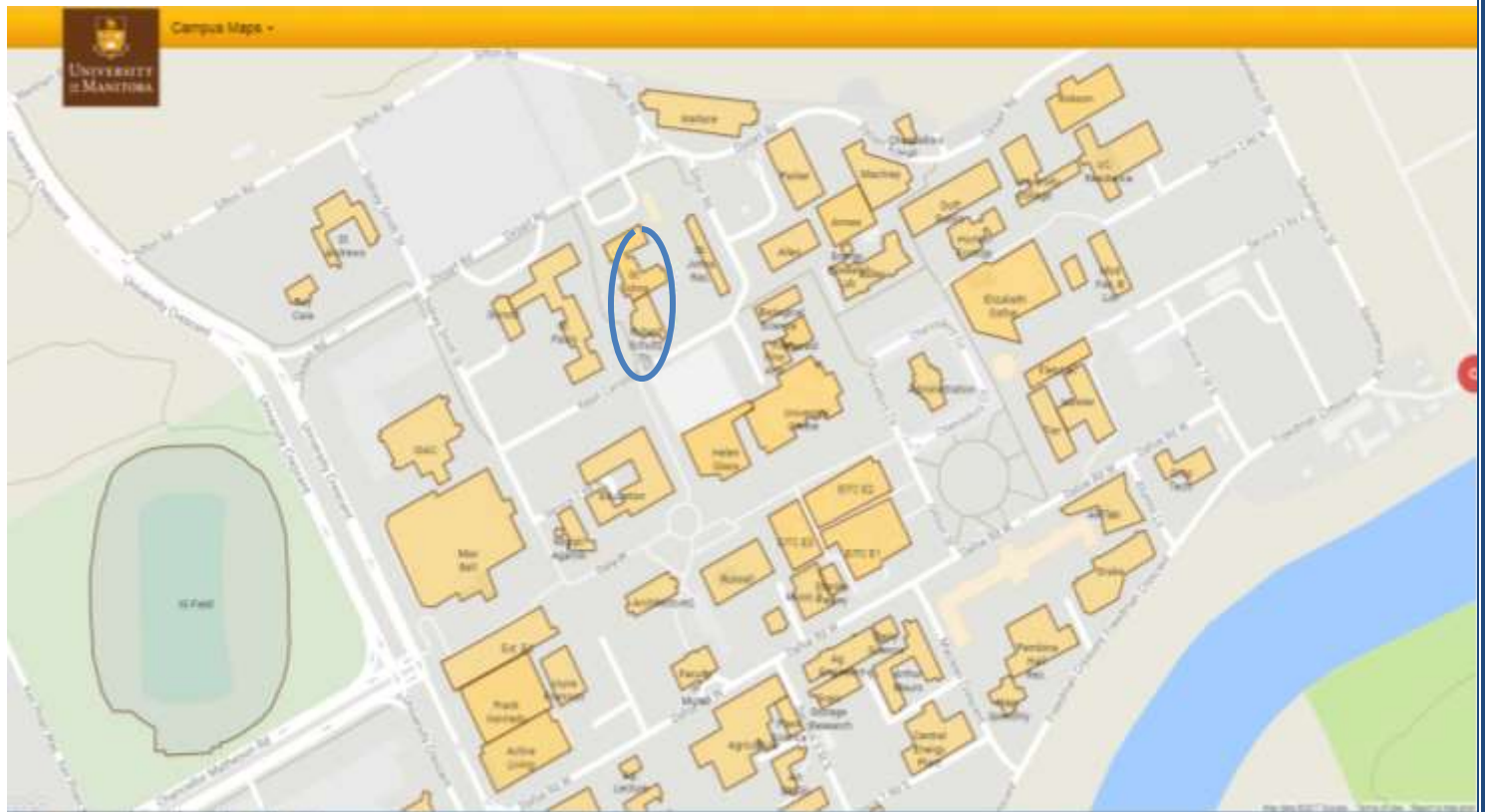


Transit Maps

Please see the following for map for bus number 60 Pembina, University of Manitoba. If you are taking a bus to University from the Best Western Hotel, you can catch Bus 60 on Southbound Pembina at Manahan. A weekly bus pass is included for out-of-town participants. Regular fare is \$2.70 per trip.



Campus Map



For better viewing please go to: <http://umanitoba.ca/maps/>